

# MAYA MAP

The Maya civilization once spanned hundreds of cities throughout Mesoamerica. Today this part of the world makes up present-day Central America and Mexico.

Grab your expedition map! It's time to visit four ancient Maya sites, but first you'll need to complete three assignments.

1. Central America is an isthmus. An **isthmus** is a strip of land that connects two larger land areas. It is surrounded by water. Add these to the map:

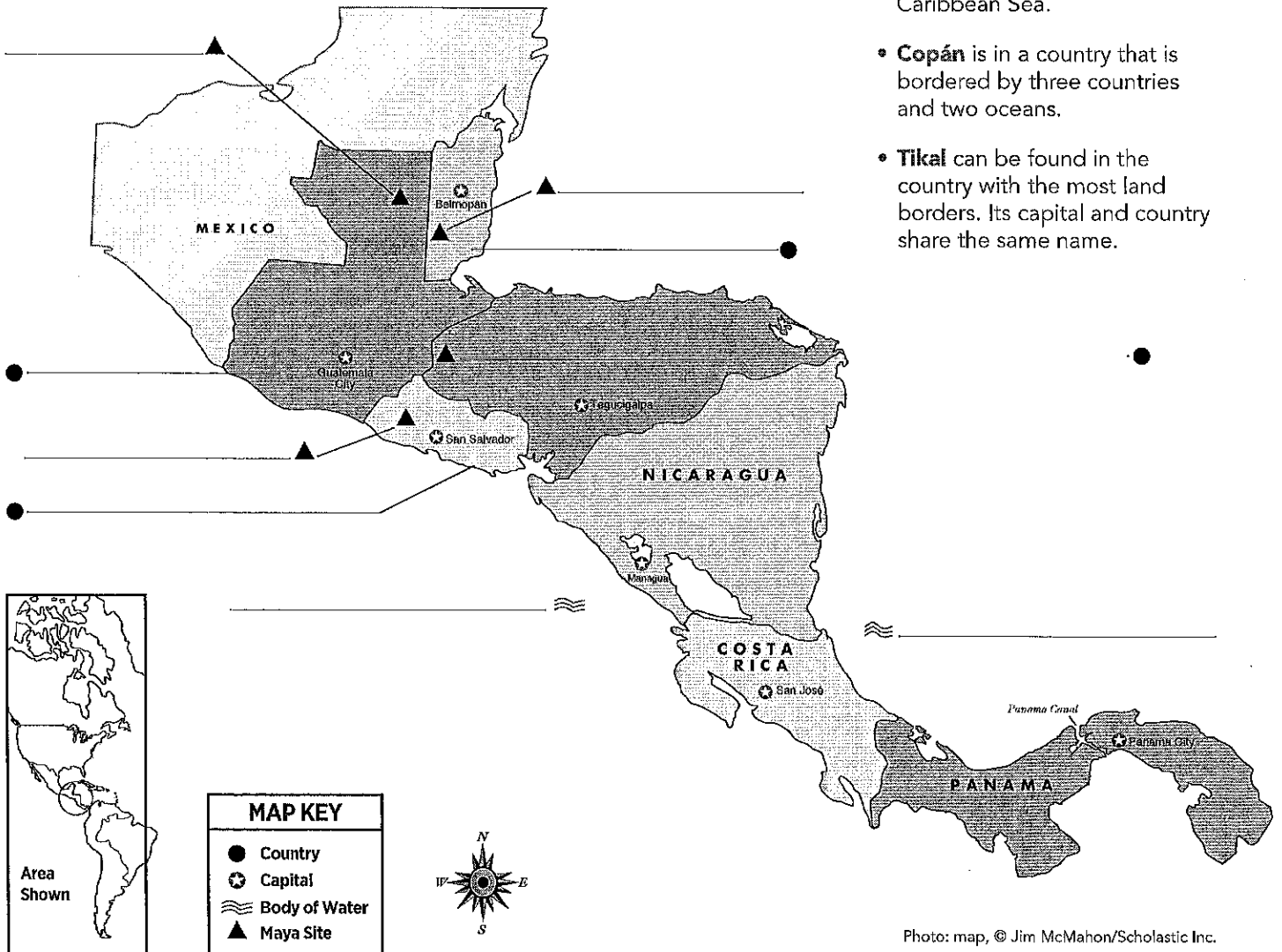
- Caribbean Sea
- North Pacific Ocean

2. Use your geography skills and knowledge of capital cities to label the following countries on the lines with the circles:

- Belize
- El Salvador
- Guatemala
- Honduras

3. Four ancient Maya sites have been marked with triangles on the map. Use the clues below to locate and label the sites.

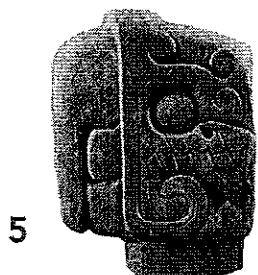
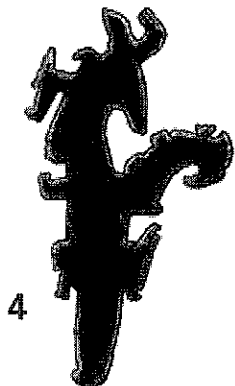
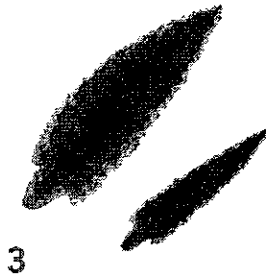
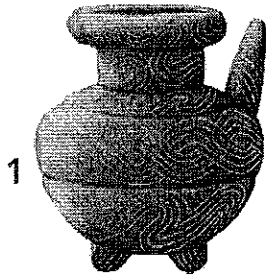
- **Caracol** is in the only Central American country without a coastline on the North Pacific Ocean.
- **Cerén** can be found in the smallest country in Central America, which is also the only Central American country without a coastline on the Caribbean Sea.
- **Copán** is in a country that is bordered by three countries and two oceans.
- **Tikal** can be found in the country with the most land borders. Its capital and country share the same name.



# ANCIENT ARTIFACTS

Archaeologists are scientists who search for artifacts so they can learn more about ancient places and the people who lived there in the past. They make inferences and draw conclusions about the meaning of the artifacts to figure out how or why the items were used by a group of people. "Dig" through these clues to learn more about the ancient Maya culture.

**PART 1:** Match each artifact with the fact about Maya culture that best describes it. Write the letter that matches on the line.

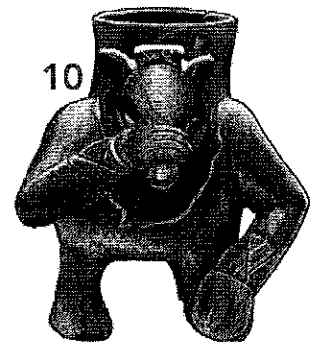
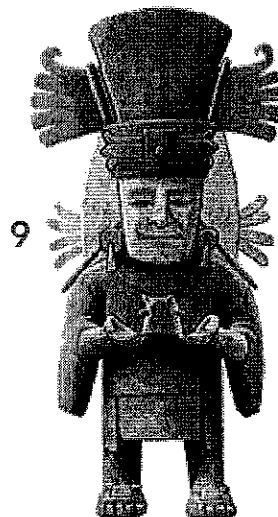
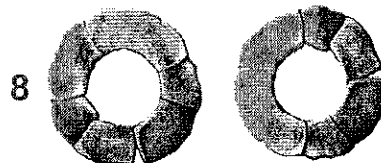
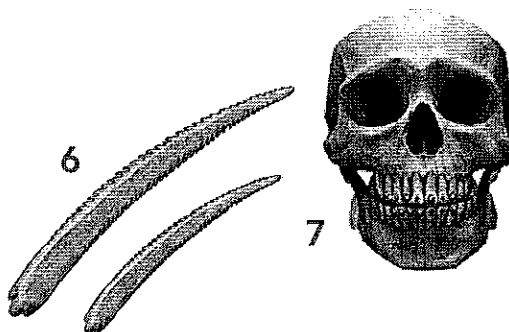


**ARTIFACT:**

1. cacao pot \_\_\_\_
2. metate \_\_\_\_
3. arrowhead \_\_\_\_
4. scepter \_\_\_\_
5. ballcourt marker \_\_\_\_
6. stingray spines \_\_\_\_
7. tooth inlays \_\_\_\_
8. shell goggles \_\_\_\_
9. incense burner \_\_\_\_
10. plumbate pot \_\_\_\_

**MAYA FACT:**

- A. an instrument used to grind maize
- B. highly decorated glazed pottery used for trade
- C. dental fillings often made of jade and usually reserved for the Maya elite
- D. an item used to communicate with the gods
- E. a vessel used to hold a sacred food
- F. protective wear used by Maya warriors
- G. a staff used by a Maya king
- H. a circular feature that established a dividing line between teams in Maya ball games
- I. instruments used for bloodletting
- J. a weapon made from obsidian, a volcanic glass



**PART 2:** Make inferences about how the ancient Maya used the artifacts above. On the back of this page, sort the items into the categories below.

- Daily Life
- Adornment
- Ritual/Ceremony
- Recreation