

# Canada

## Geographical Regions of Canada



# The Atlantic Region



# The Atlantic Region

- Home to only 10% of Canada's population
- Islands of Newfoundland & Maritime provinces—New Brunswick, Nova Scotia, & Prince Edward Island
- Rugged with sandy beaches & dense forests
- Major industries are fishing & forestry



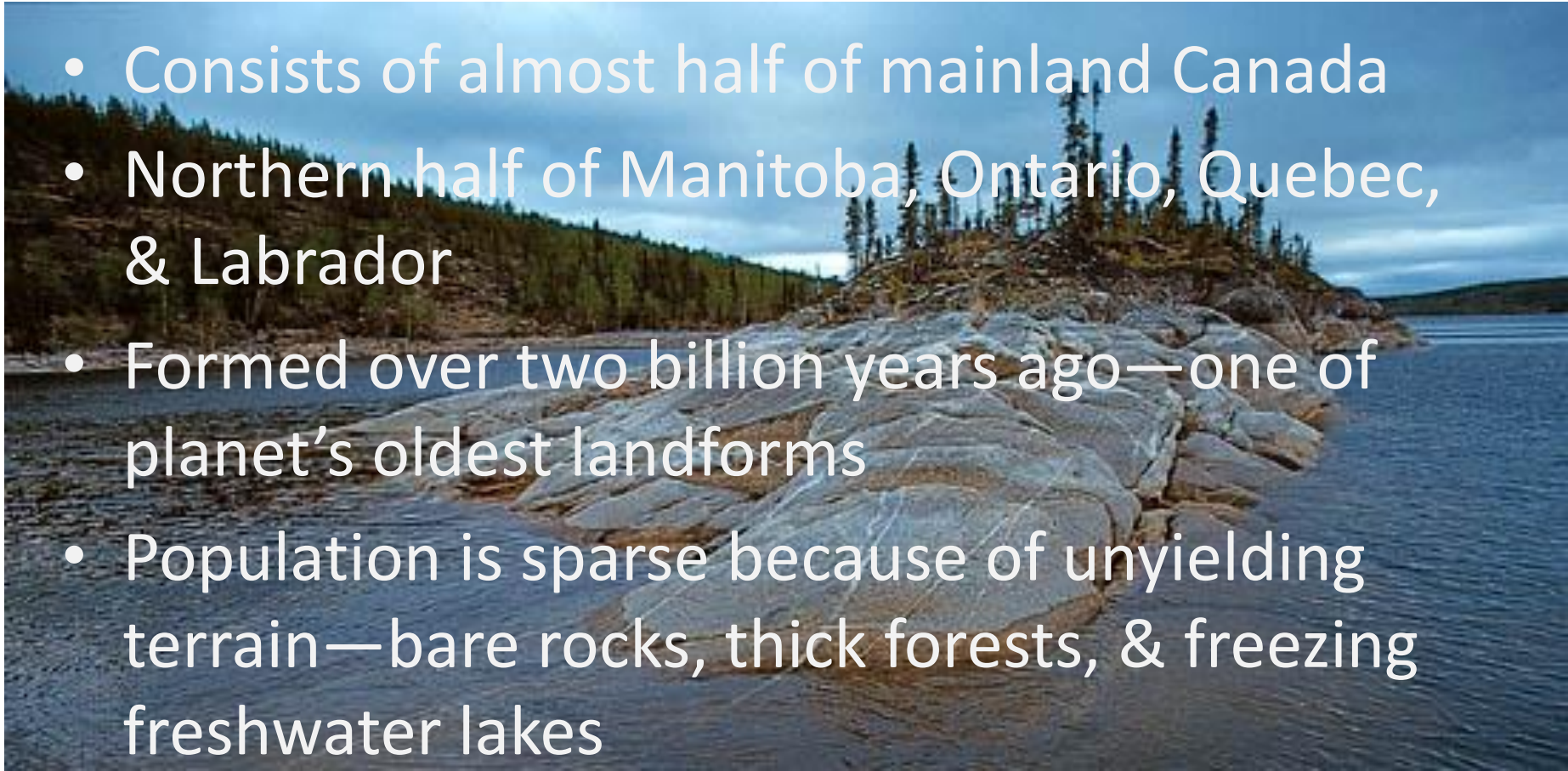


# The Canadian Shield



# The Canadian Shield

- Consists of almost half of mainland Canada
- Northern half of Manitoba, Ontario, Quebec, & Labrador
- Formed over two billion years ago—one of planet's oldest landforms
- Population is sparse because of unyielding terrain—bare rocks, thick forests, & freezing freshwater lakes





# The Great Lakes—St. Lawrence Lowlands



# The Great Lakes—St. Lawrence Lowlands

- The heartland of Canada
- Industrial mecca of Canada
- $\frac{3}{4}$  of country's manufactured goods come from area
- More than  $\frac{1}{2}$  of Canada's total population located in area
- Includes large cities of Montreal, Quebec, Toronto, & Ottawa





# The Prairie Provinces





# The Prairie Provinces

- Has been called Canada's "bread basket"
- Much of the land is devoted to farming & cattle ranching
- Area is extremely flat
- Consists of provinces of Alberta, Saskatchewan, & southern part of Manitoba
- Good for agriculture
- Made Canada 2<sup>nd</sup> largest exporter of grain after US



# The Cordillera



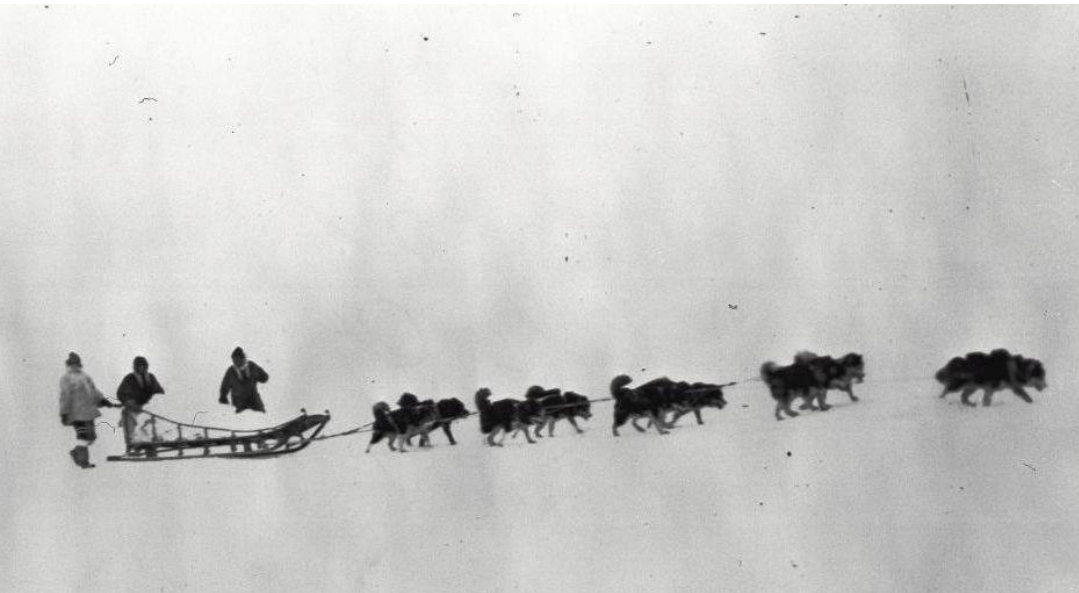


# The Cordillera

- A beautiful landscape framed by Rocky Mountains on both east & west
- Major industries are tourism, forestry, & cattle farming
- Vancouver & Victoria are area's major cities



# The Arctic





# The Arctic

- Region covers over 40% of Canada's land area
- Cold, barren, & very isolated
- Includes Yukon, Northwest Territories, & Nunavut
- Population is scarce but incredibly diverse
- 17,000 of world's Inuit population live there
- Winters are long & dark
- Most people are hunters, trappers & miners

