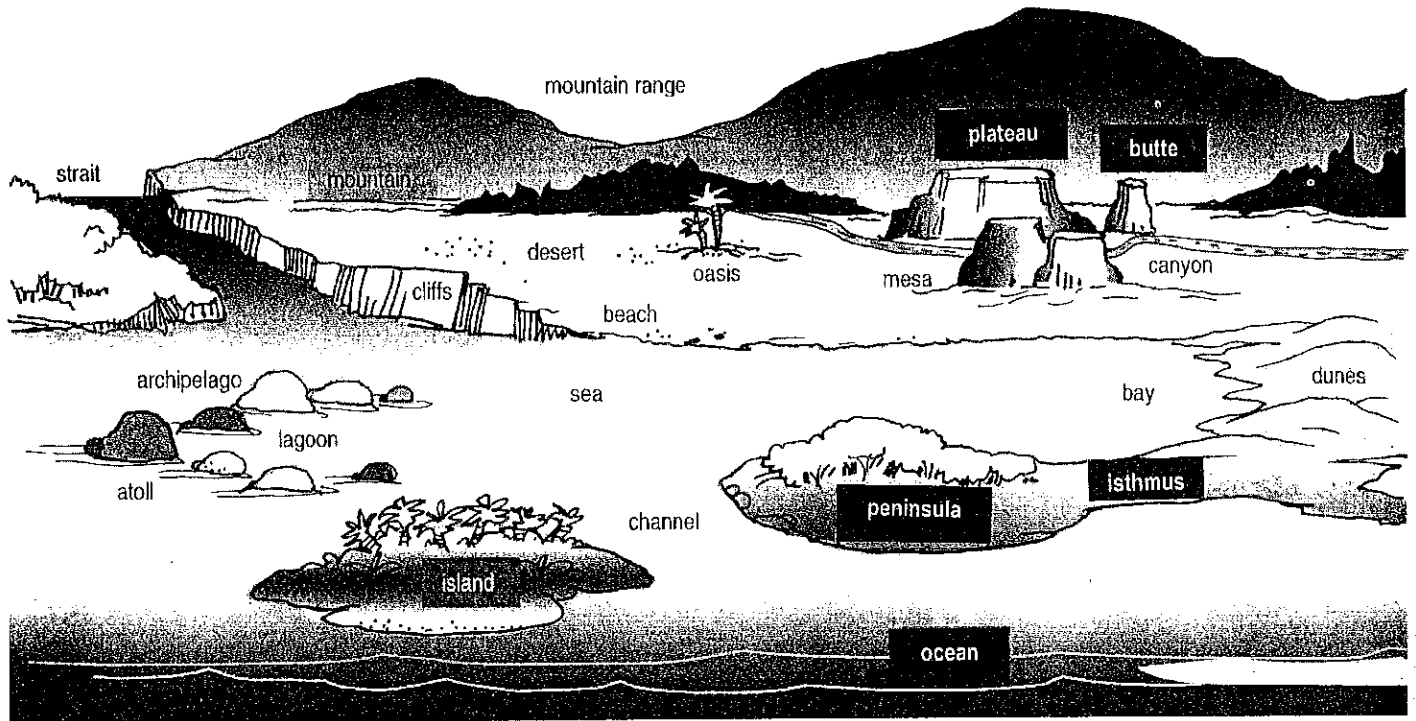


Earth's Amazing Surface



The surface of Earth is a wonderful collection of peaks and troughs, dry lands and wet lands, rippling streams and wild seas, breathtaking panoramas and curious formations. Here's a brief, illustrated overview of landforms and water forms that spread across Earth's surface.

archipelago – large group or chain of islands

atoll – ring-shaped coral island or string of islands, usually surrounding a lagoon

bay – part of a large body of water that extends into the land

beach – gently sloping shore of ocean or other water body

butte – flat-topped hill; smaller than a mesa

canal – waterway built to connect two other bodies of water

canyon – deep, narrow valley with steep sides

cape – coastline that projects into the water

channel – narrow strip of water between two land bodies

cliff – steep rock face

delta – land formed by deposits at the mouth of the river

dune – mound, hill, or ridge of sand heaped by wind

fjord – deep narrow inlet of the sea between steep cliffs

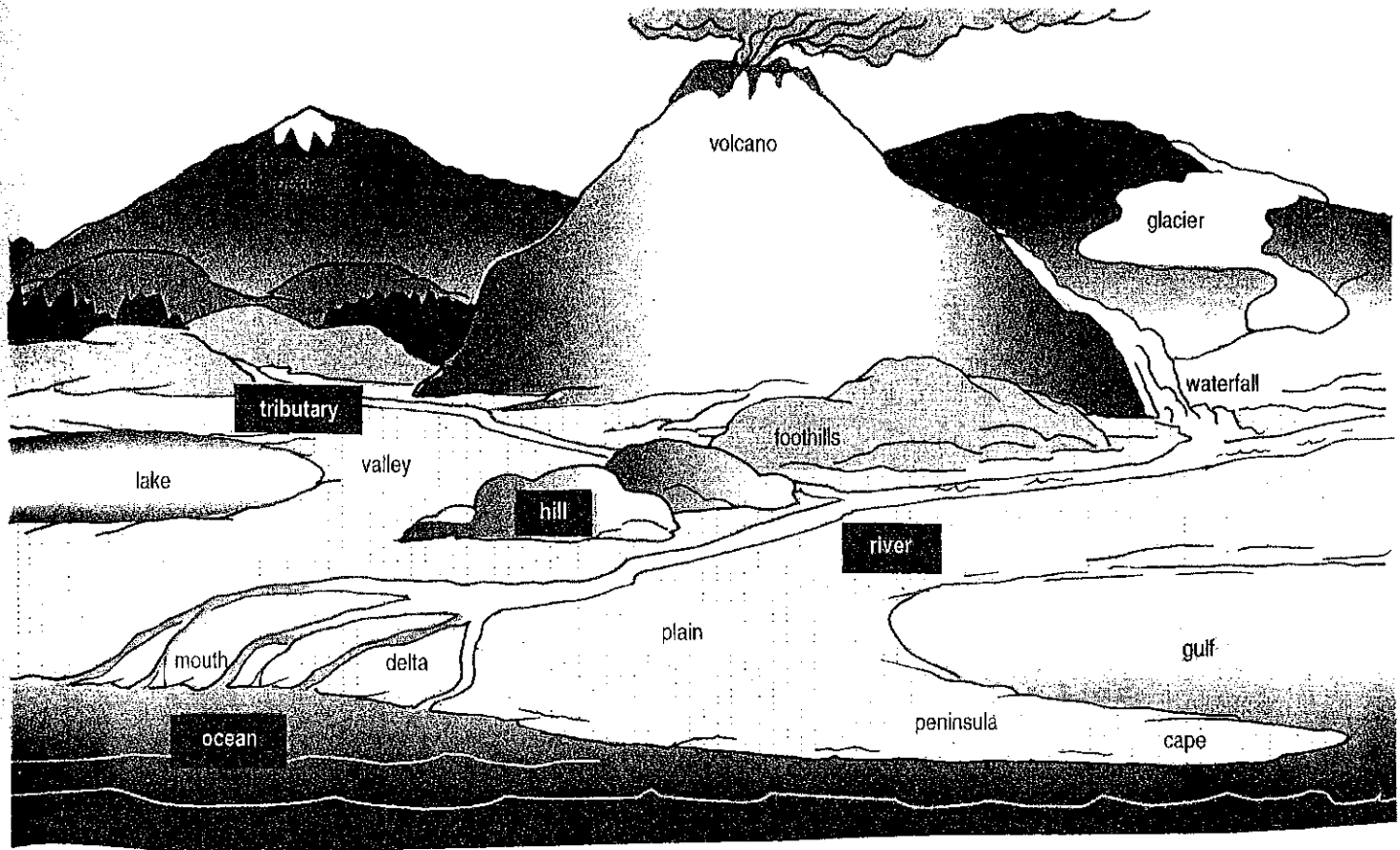
foothills – hilly area at the base of a mountain range

glacier – large sheet of ice that moves slowly over a land surface

gulf – part of an ocean or sea that extends into the land; larger than a bay

hill – rounded, raised landform; lower than a mountain

island – body of land completely surrounded by water



isthmus – narrow strip of land (bordered by water) joining two larger bodies of land

lake – body of water completely surrounded by land

lagoon – shallow water area enclosed within an atoll or cut off from sea by a strip of land

mesa – high, flat landform rising steeply above surrounding land; smaller than a plateau

mountain – high, rounded or pointed landform with steep sides

mountain range – row or chain of mountains

mouth – place where a river empties into a body of water

oasis – a place in a desert where a supply of water makes the land fertile

ocean – one of Earth's four largest bodies of water

peak – pointed top of a mountain or hill

peninsula – body of land nearly surrounded by water

plain – large area of level or gently rolling land

plateau – area of high, flat land; larger than a mesa

river – large stream of water that flows across land and empties into a larger water body

sea – large bay of water partly or entirely surrounded by land

strait – narrow waterway or channel connecting two bodies of water

tributary – river or stream that flows into a larger river or stream

valley – V-shaped depression between mountains or hills

volcano – mountain created by volcanic action

waterfall – flow of water falling from a high place to a low place